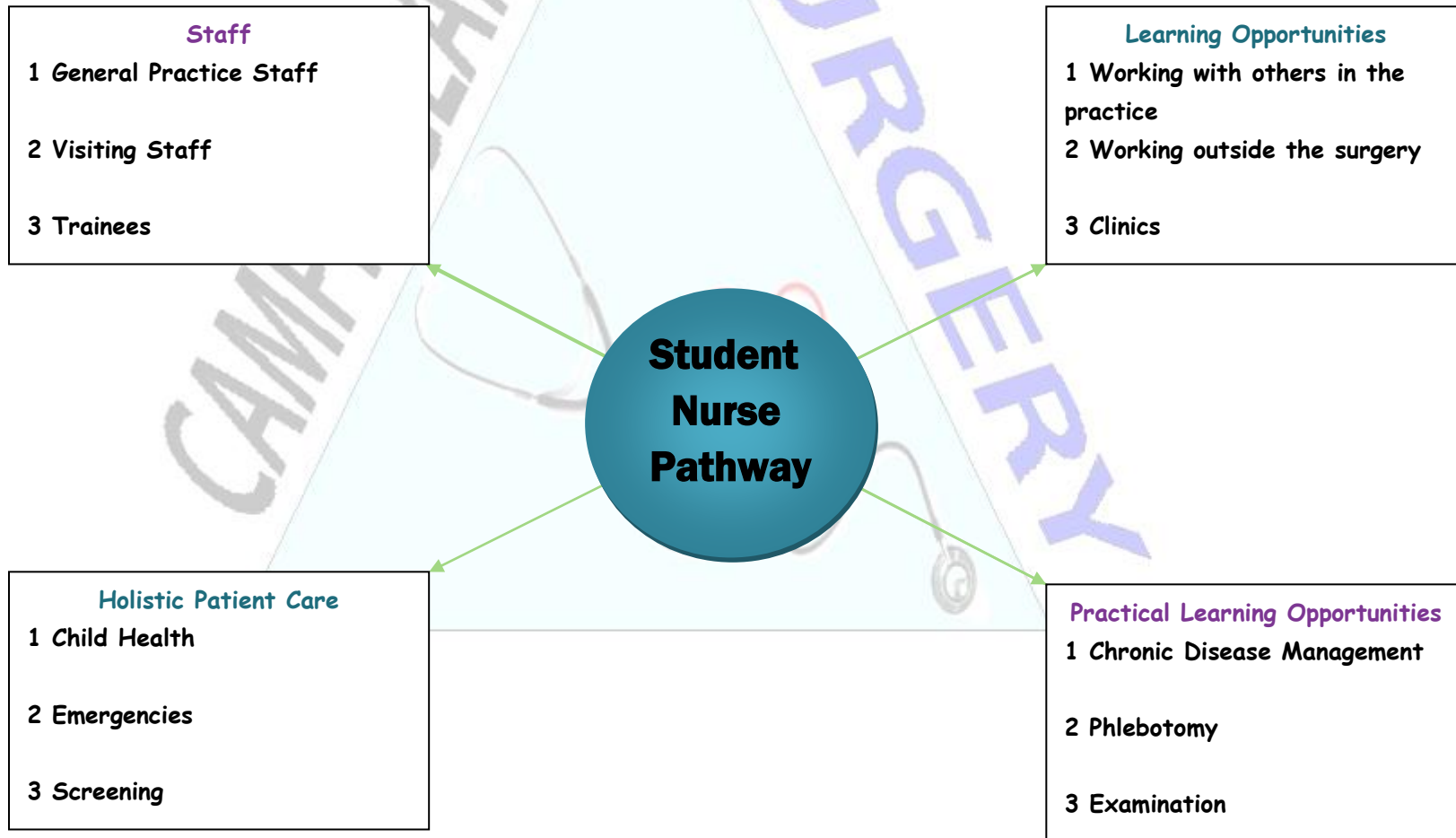


## Student Nurse Placement Information



## Staff

### PRACTICE STAFF

GENERAL PRACTITIONER X7

PRACTICE MANAGER X 1

NURSES X 5

RECEPTIONISTS X 4

DISPENSERS X 5

ADMINISTRATION STAFF X 6

CLEANING STAFF X 2

COUNSELLOR X 1

### VISITING STAFF

DIETITIAN

MIDWIFE

MENTAL HEALTH NURSE

### TRAINEES

STUDENT NURSES

DISTRICT NURSE STUDENTS

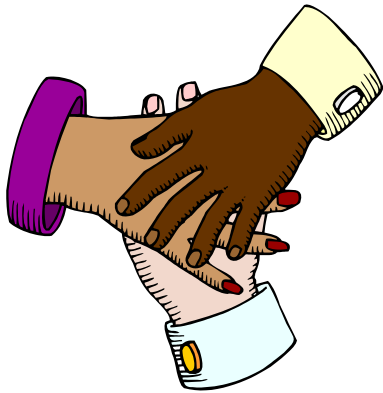
GP REGISTRARS

MEDICAL STUDENTS

## Staff



## Learning Opportunities



### Learning Opportunities

POTENTIAL TO WORK WITH :-

GP's :- IN SURGERY AND ON HOME VISITS

NURSE's

RECEPTION STAFF

DISPENSARY

DISTRICT NURSE

MIDWIFE

DIETITIAN

PARAMEDIC

COMMUNITY HOSPITAL

FUNERAL DIRECTOR

#### CLINICS

DIABETES

RESPIRATORY

OSTEOPOROSIS

WELL WOMAN

## Practical Learning Opportunities 2

### Practical Learning Opportunities

TEMPERATURE, PULSE, APEX BEAT, RESPIRATORY RATE.

BLOOD PRESSURE ESPECIALLY BY MANUAL MEASUREMENT

HEIGHT, WEIGHT, WAIST CIRCUMFERENCE, URINALYSIS, BLOOD GLUCOSE TESTING.

TAKING ECG's

PHLEBOTOMY :- EQUIPMENT, BOTTLE TYPE, TAKING AND

LABELING OF SAMPLES. CARE OF SAMPLES. GLUCOSE

TOLERANCE TEST.

PEAK FLOW MEASUREMENT AND PULSE OXIMETRY

SPIROMETRY

INJECTIONS, INJECTION TECHNIQUE AND SITES FOR INJECTION

DRESSINGS, WOUND HEALING, DRESSING TYPES AND USES.

LEG ULCER MANAGEMENT

REMOVAL OF SUTURES, CLIPS AND STAPLES. TIMING FOR REMOVAL OF THESE.

CONSULTATION SKILLS.

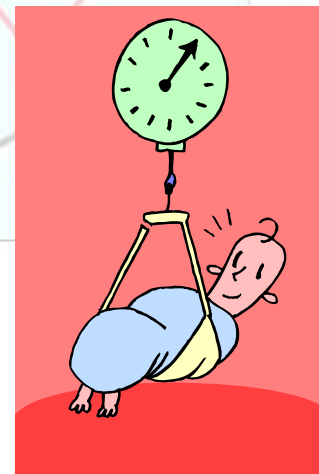
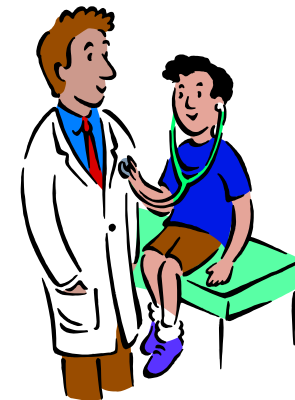
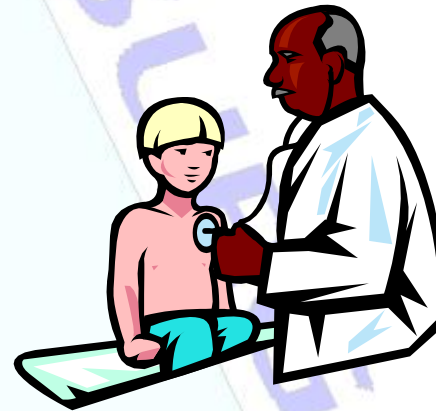
EXAMINATION OF EYES, EARS, MOUTH AND THROAT.

PEDAL PULSES

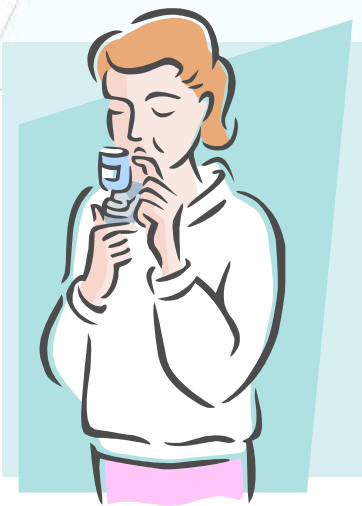
FIRST AID AND EMERGENCY WOUND MANAGEMENT

MINOR SURGERY.

IMPORTANCE OF COLD CHAIN MANAGEMENT



## Holistic Approach to Care of Patients Includes



### **Holistic Approach to Care of Patients Includes:-**

PRE-CONCEPTUAL ,ANTE-NATAL AND POST-NATAL CARE.

**CHILD HEALTH** :- MILESTONE CHECKS, CHILDHOOD IMMUNISATION SCHEDULE ,CHILDHOOD ILLNESSES

**CONTRACEPTION** :- ORAL, INJECTABLE, IMPLANTS, COILS AND EMERGENCY CONTRACEPTION.

MINOR INJURY AND FIRST AID, MINOR ILLNESS, MINOR SURGERY

**EMERGENCIES** :- FALLS, ANGINA, MI, EXACERBATION OF ASTHMA, ANAPHYLAXIS, DIABETIC KETOACIDOSIS. WOUND CARE AND LEG ULCER MANAGEMENT

**LONG-TERM CONDITIONS** :- ASTHMA, COPD, DIABETES, ISCHAEMIC HEART DISEASE, STROKE, TIA , HYPERTENSION, OSTEOPOROSIS AND EPILEPSY, SEXUAL HEALTH INCLUDING TESTING FOR, SEXUALLY TRANSMITTED INFECTIONS, PALLIATIVE CARE, END OF LIFE CARE AND BEREAVEMENT VISITS, INFECTION CONTROL TRAVEL HEALTH INCLUDING VACCINATIONS

**HEALTH PROMOTION** :- TEENAGE HEALTH CHECKS, FLU VACCINATION AND FLU PANDEMICS,TRAVEL, SUN PROTECTION, WEIGHT CONTROL AND DIET. SMOKING CESSATION, DRUGS AND ALCOHOL.

**SCREENING** :- CARDIOVASCULAR HEALTH CHECKS FOR OVER 40's WELL WOMAN INCLUDING CERVICAL SCREENING AND MENOPAUSE. WELL MAN, HYPERTENSION